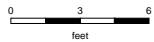
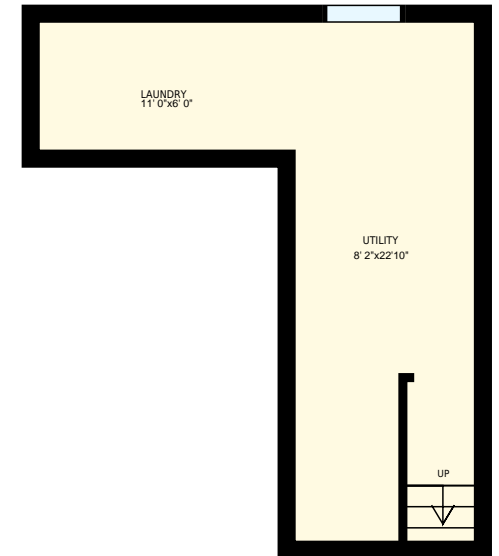
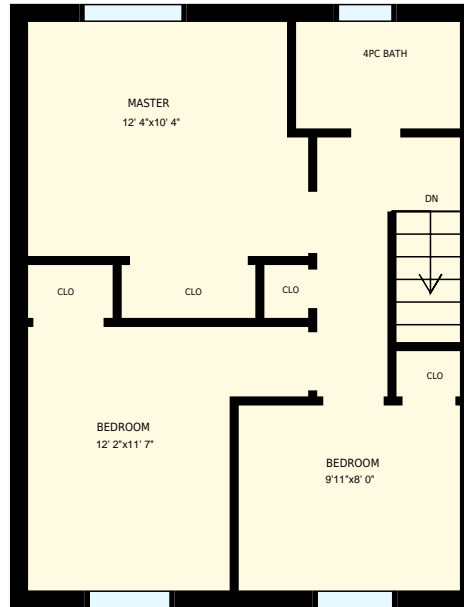
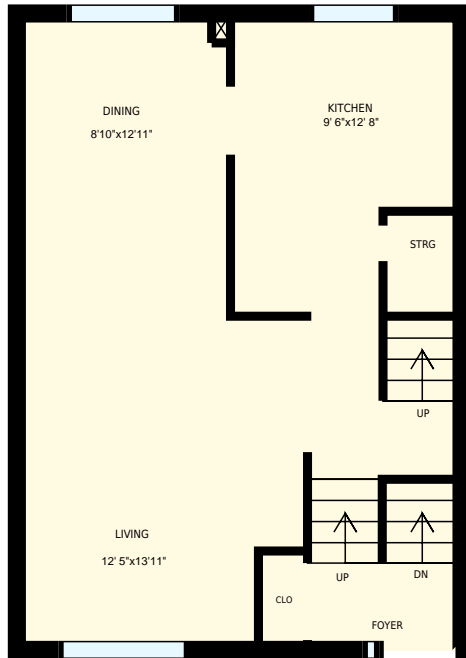




# Unit 6 1095 Mississaga St W, Orillia, ON

Total Exterior Area Above Grade 1139 sq ft



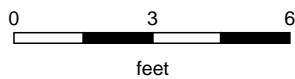
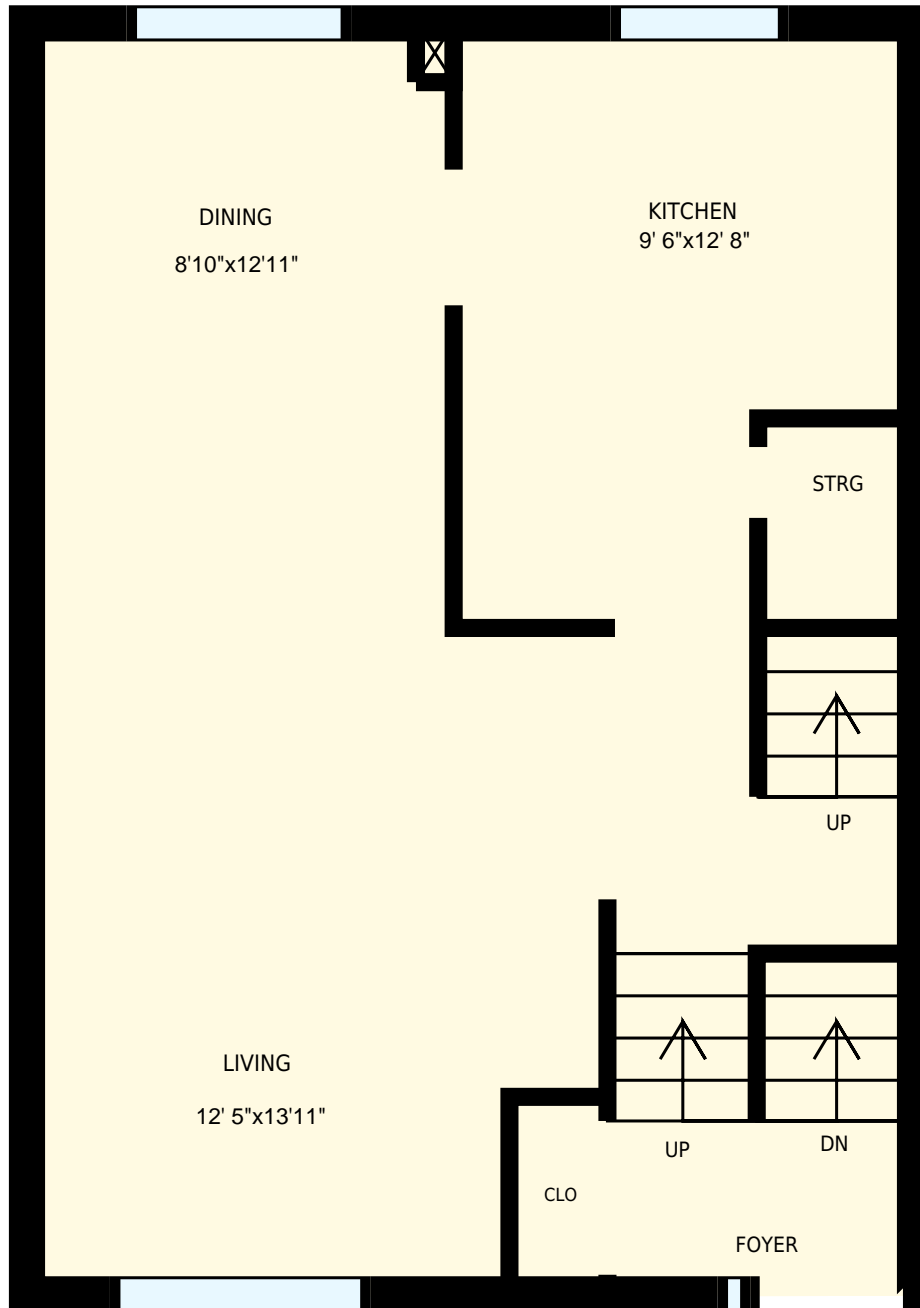
**Main Floor**  
Exterior Area 590 sq ft

**2nd Floor**  
Exterior Area 549 sq ft

**Basement**  
Exterior Area 321 sq ft

White regions are excluded from total floor area. All room dimensions and floor areas must be considered approximate and are subject to independent verification. For method of measurement please see <https://youriguide.com/measure/>.

PREPARED FOR:

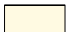


Unit 6 1095 Mississaga St W, Orillia, ON

PREPARED FOR:

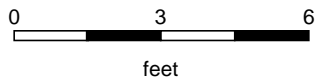
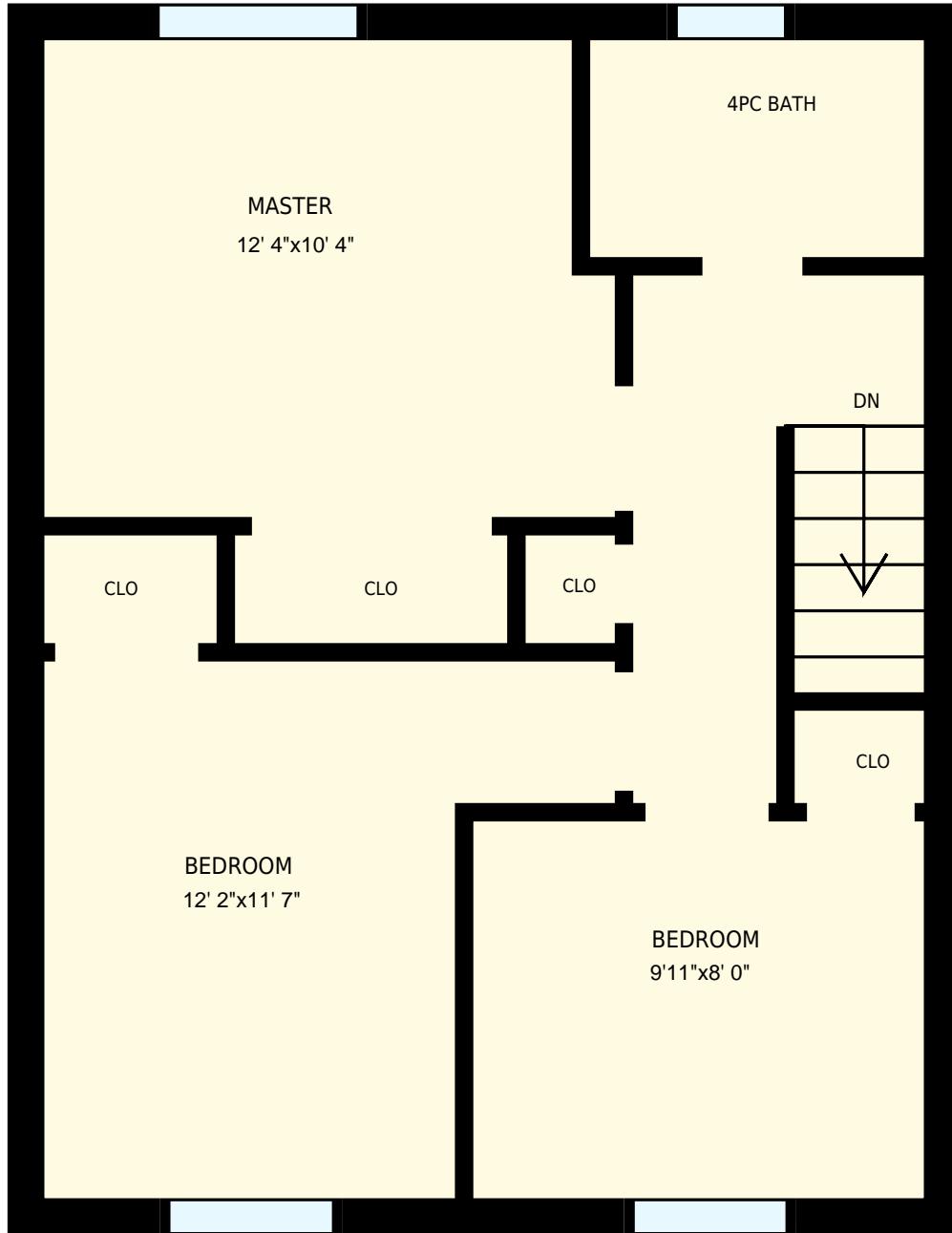
Main Floor

Interior Area 520 sq ft  
Exterior Area 590 sq ft

 Included Area

PREPARED:  
Jun, 2017

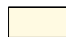
White regions are excluded from total floor area. All room dimensions and floor areas must be considered approximate and are subject to independent verification. For method of measurement please see <https://youriguide.com/measure/>.



Unit 6 1095 Mississaga St W, Orillia, ON  
2nd Floor

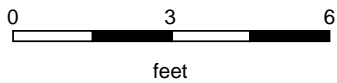
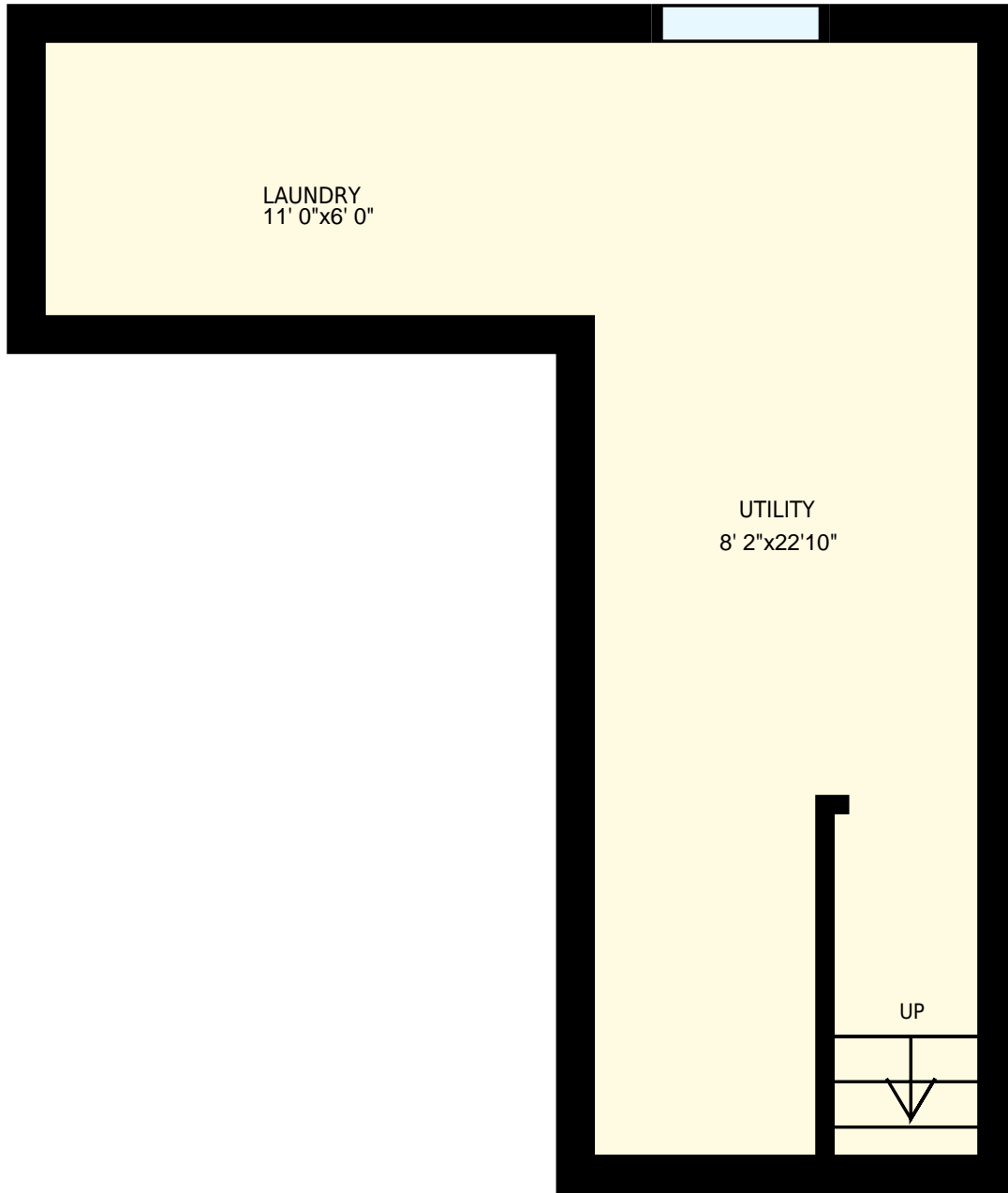
PREPARED FOR:

Interior Area 482 sq ft  
Exterior Area 549 sq ft

 Included Area

PREPARED:  
Jun, 2017


White regions are excluded from total floor area. All room dimensions and floor areas must be considered approximate and are subject to independent verification. For method of measurement please see <https://youriguide.com/measure/>.



Unit 6 1095 Mississauga St W, Orillia, ON  
Basement

PREPARED FOR:

Interior Area 257 sq ft  
Exterior Area 321 sq ft

 Included Area

PREPARED:  
Jun, 2017

White regions are excluded from total floor area. All room dimensions and floor areas must be considered approximate and are subject to independent verification. For method of measurement please see <https://youriguide.com/measure/>.